

# Djili Bippera (see us, hear us)

Reference: Western Yalanji Language, Traditional Owner David Hudson, March 2016.

A Hospital Board community engagement improvement strategy; establishing an Aboriginal and Torres Strait Islander Health Community Consultation Committee.



Cairns and Hinterland Hospital and Health Service, 2016.

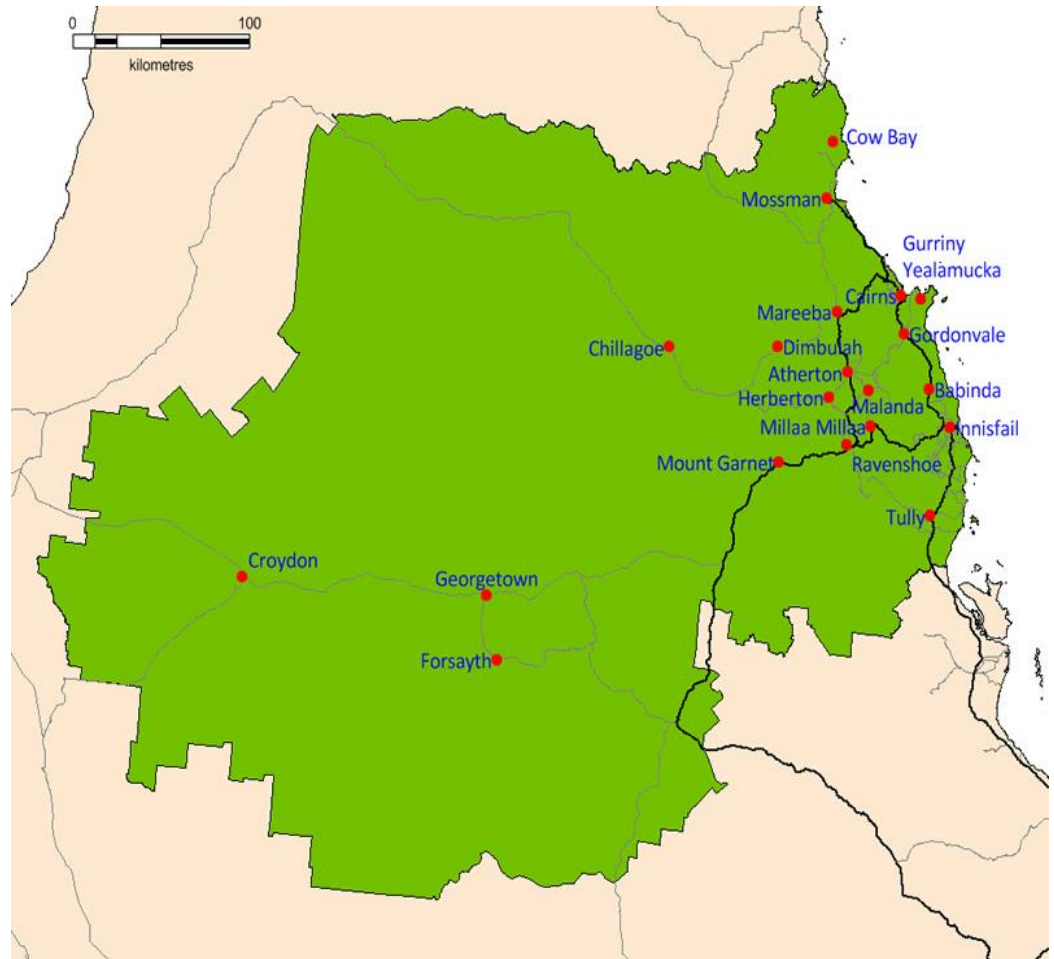
# Cairns and Hinterland Hospital and Health Service

## Geographic coverage

142 900 square kilometres from Tully in the south, Cow Bay in the north and Croydon in the west.

## Total population

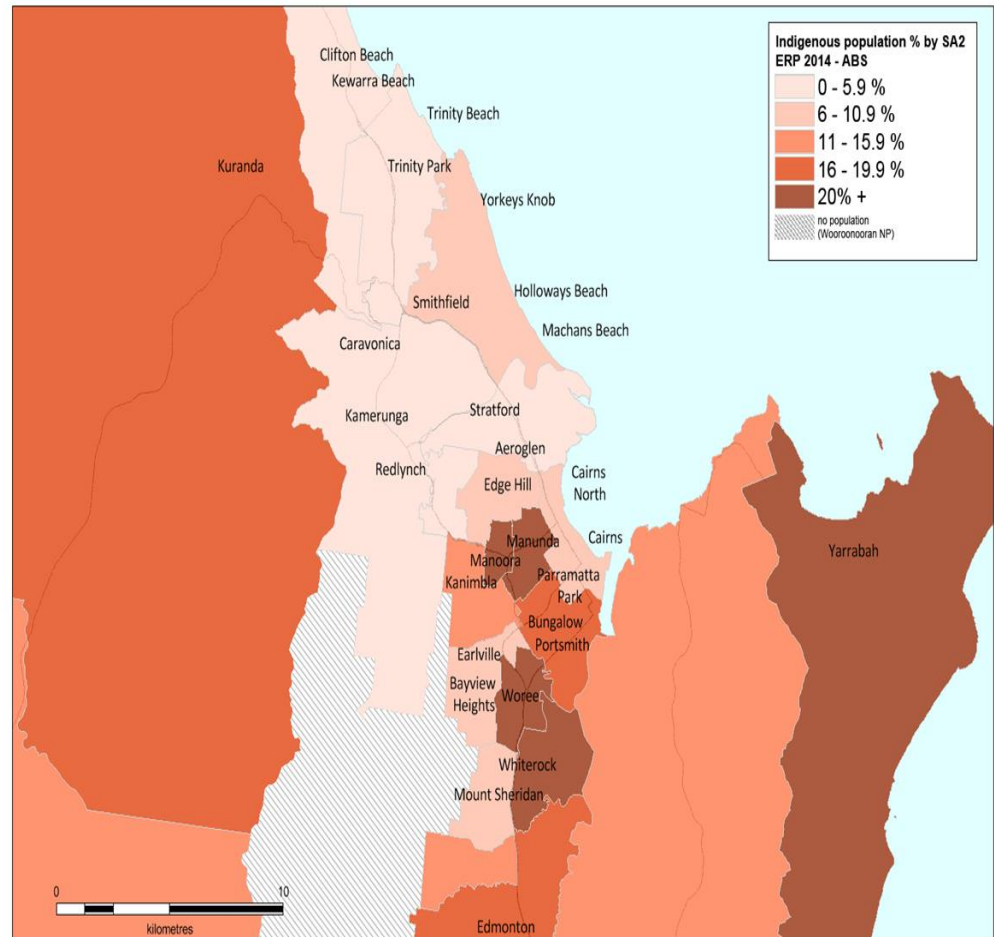
247,563 in 2014, equivalent to 5.2% of the total population of Queensland.



# Indigenous Population

## Indigenous population

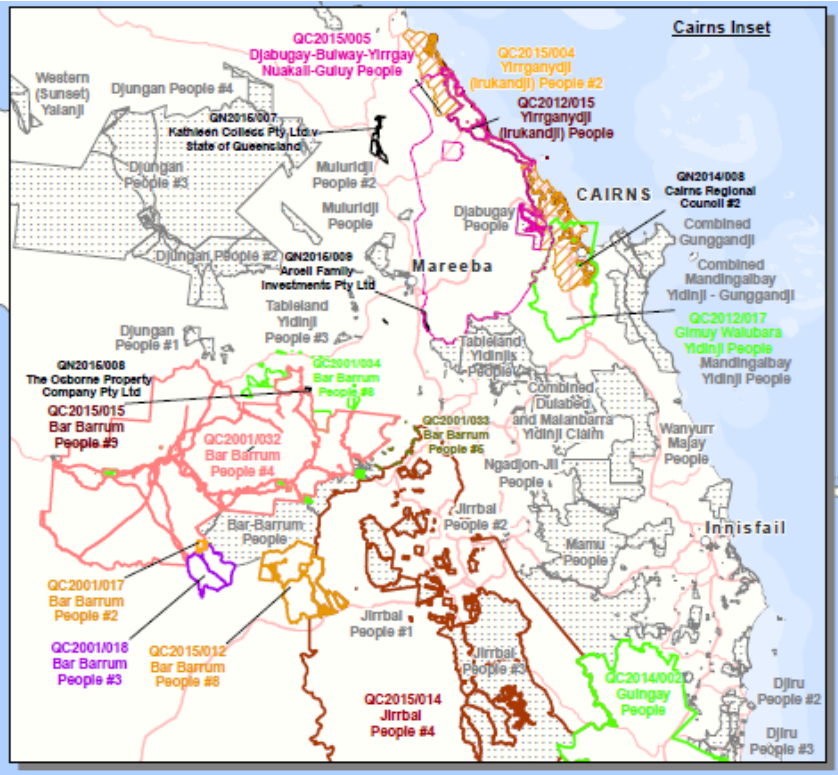
Indigenous residents (n=31,326) accounted for 12.6% of the total estimated resident population of the CHHHS in 2014 and 15.4% of the total estimated Indigenous population of Queensland



# Traditional Owner groups

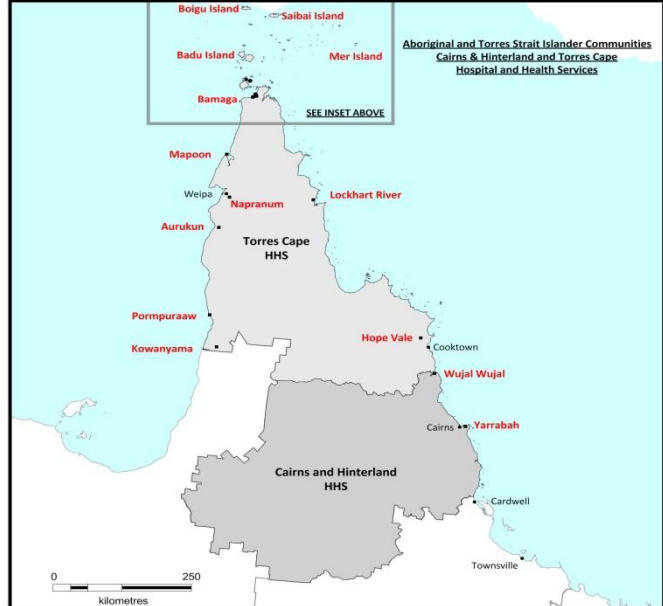
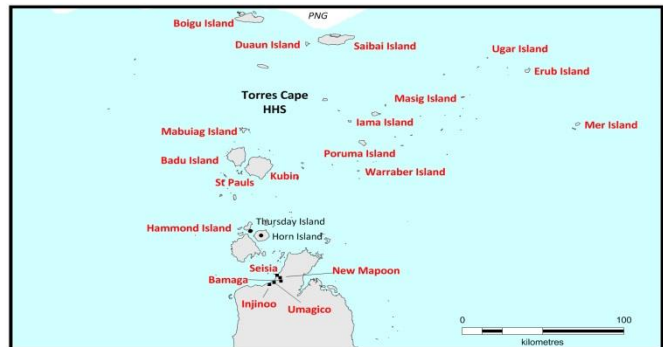
## Aboriginal

According to National Native Title Tribunal there are 17 Active Native Title Determinations. within CHHS boundaries These determinations are linked with up to 23 traditional owner groups, 18 of which are shown in this map that is representative of Cairns and Hinterland Catchment Area .



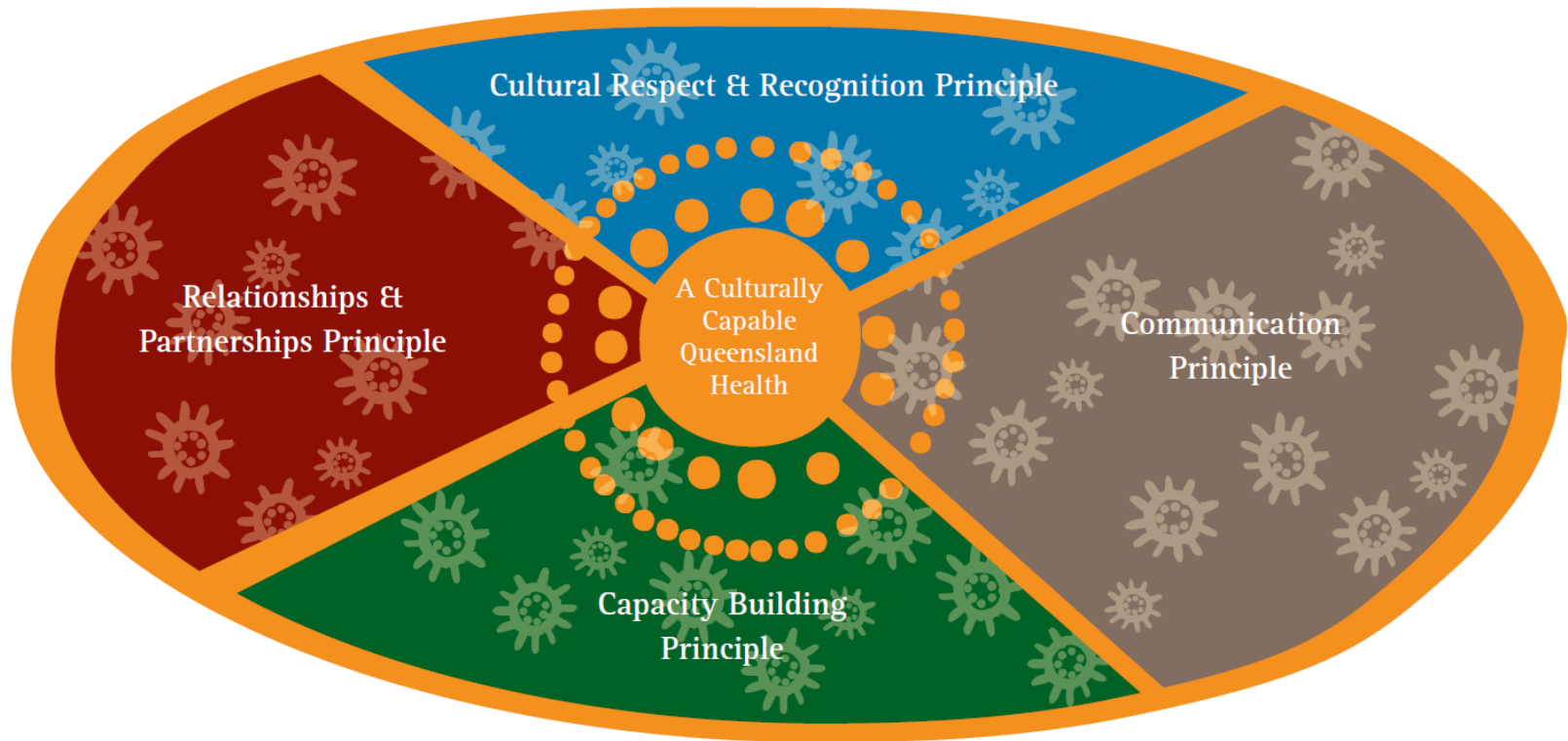
# Remote Communities

Torres Strait Regional Authority list 21 Prescribed Body Corporates (PBC'S) AND Cape York Land Council confirm 13 PBC'S that are actively administering their Native Title rights. It should be noted that more than one traditional owner group (i.e. clan group) can be represented under each PBC.



# Why did we do this?

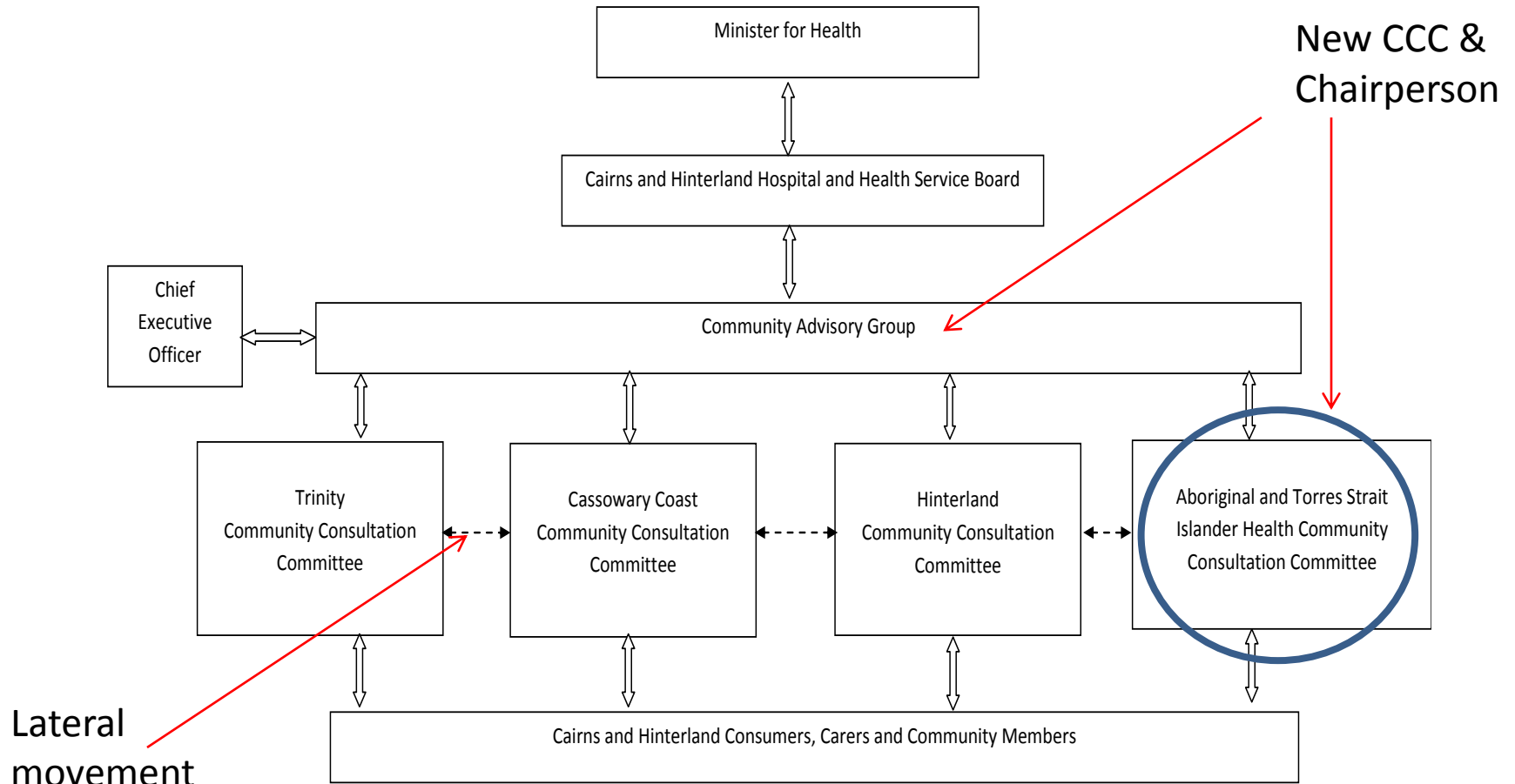
Figure 3: Guiding Principles for Queensland Health Aboriginal and Torres Strait Islander cultural capability



# How did we do this?

- Stakeholder identification
- System design
- Communication strategy
- Recruitment strategy
- Committee supports
- System review

# The new model actioned





# Focus on Leadership

Board and Executive

Aboriginal and Torres  
Strait Islander Health Unit

Community Champions

Media, Marketing and  
Communications



Executive Director  
Information Strategy  
and Planning



Hospital Board Member  
& Community Advisory  
Group Chairperson



# Keys to Success

Executive and Board  
Leadership

Community Champions  
Consultation

- Building bridges
- Trust, respect and partnerships

Participation and Action



A Traditional Owner and the Chief Executive Cairns and Hinterland Hospital and Health Service

# Key Achievements

- An approved system of cultural knowledge
- Organisational cultural intelligence to inform planning and service delivery
- Opportunities for Indigenous health service and consumer information pathways
- A point of reference for monitoring and evaluation of Indigenous health outcomes in partnership with consumers

# The Aboriginal and Torres Strait Islander Community Consultation Committee



# Questions?

For more information contact:

Simon Costello  
Senior Project Officer  
Cultural Capability

Aboriginal and Torres Strait Islander Health Unit

Cairns and Hinterland Hospital and Health Service

M: 0447775985

E: [simon.costello@health.qld.gov.au](mailto:simon.costello@health.qld.gov.au)



Members of the Executive Management Team and Aboriginal and Torres Strait Islander Health Unit