

A New Era:

**Practical and Productive Engagement
of Consumers in Scientific Research**

Dr. Catherine Itman

**the Society for Reproductive Biology
*and***

the University of the Sunshine Coast, QLD

Society for
**Reproductive
Biology**



What is health and medical research?

Finding answers to human health problems

Translational research

Clinical research and clinical trials

Health services and health systems research

Public health research

What is health and medical research?

Finding answers to human health problems

Translational research

Clinical research and clinical trials

Health services and health systems research

Public health research



Basic research

long term research that your children and grandchildren will benefit from

The Society for Reproductive Biology (SRB)

*the premier scientific society for the study
of reproduction*

puberty

fertilization

endometriosis

hormone deficiency

lifestyle effects

genetic defects

egg and sperm production

placenta and pregnancy

reproductive cancers

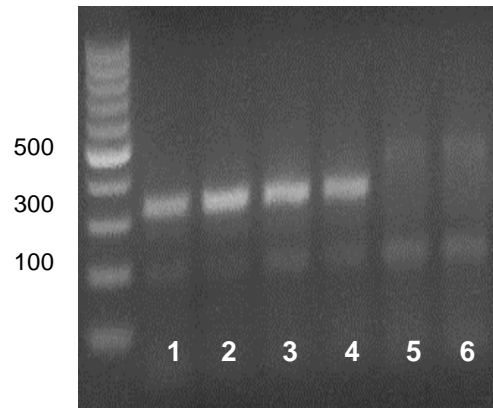
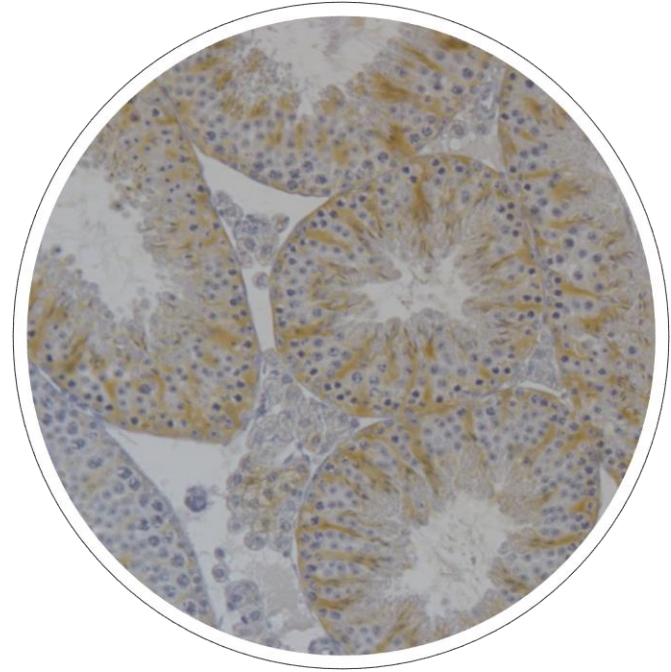
chemical exposure

parental health effects on offspring

DNA damage



What basic research looks like



SRB wants to engage consumers in basic research

We do research that benefits the community

We ensure research value and share information

Consumers provide valuable input about research needs, policy and practice

but... only 3% of SRB members have collaborated with consumers in research projects

How can you be involved?

How to identify what is relevant to the consumer?

What are the big questions?

Enabling consumer involvement

Focus group:

What reproductive health issues do consumers want addressed?

What practical outcomes do you need?

Reference group:

Set research priorities

Consultation, decision making, critical analysis

Contribute specific skill sets to the research team

Consumer representative on research team:

Advise participants of rights, processes, ethics

Channel information back to research team

Inform consumers of progress, disseminate findings

Interested?

Come and see me today or contact me on:

07 5456 3459

citman@usc.edu.au

<http://www.usc.edu.au/explore/structure/faculty-of-science-health-education-and-engineering/staff/dr-catherine-itman>

<http://www.srb.org.au/>